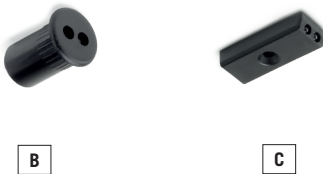
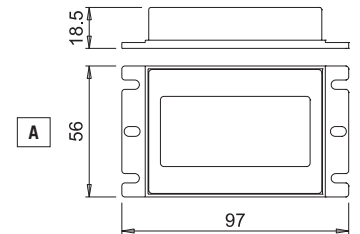


**COMBO FW**  
electronic proximity multisensor

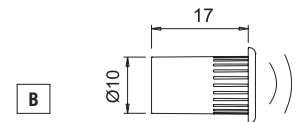


Code	Ref.	Model	Input	Output	Power	Finish
0864003	A	control module	12-24Vdc	12-24Vdc	30-60W	black
1731703/S	B	recessed sensor	-	-	-	black
1731903/S	C	20° surface sensor	-	-	-	black

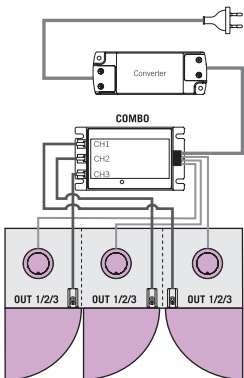


**How COMBO works**

COMBO is an infrared limit-switch with multiple independent photocells (up to 3 sensors). The connected luminaires are turned on and off by opening and closing the door on the back of which the sensors are installed. COMBO can be programmed with three different set-ups. Sensors are available for recessed (type B) and surface installation with the photocell tilted 20° (type C).



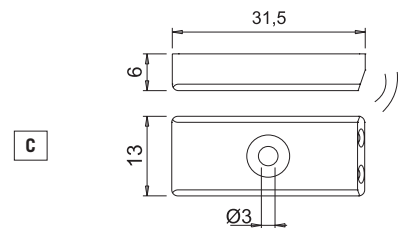
**COMBO MAY BE PROGRAMMED WITH THREE DIFFERENT SET-UPS**



**PROGRAM 1 - ALL ON/OFF**

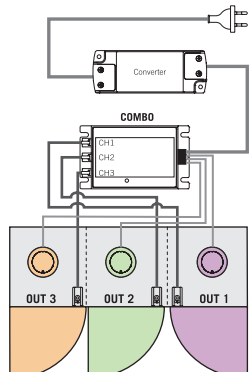
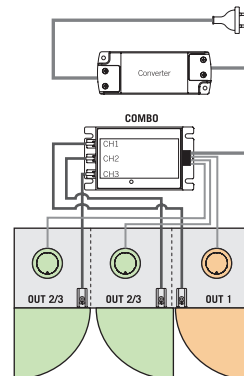
This set-up allows all luminaires connected to COMBO to be turned on and off simultaneously. The luminaire or group of luminaires is turned on when any of the doors are open and turned off only when all doors are closed.

NOTE: Read the installation manual to learn details on drilling for assembly.



**PROGRAM 2 - TWO LIGHTS ON INDEPENDENTLY**

This set-up allows two luminaires or two groups to be turned on independently. The group with two sensors will turn on when any of the doors are opened, and turns off only when all doors are closed. The third sensor works independently from the other two. Turning on and turning off are controlled by opening and closing the door, onto the back of which the third sensor is installed.



**PROGRAM 3 - THREE ON INDEPENDENTLY**

This set up allows three luminaires or group of luminaires to be turned on independently. Each sensor can turn on or off independently the luminaire or group of luminaires to which it is connected. Turning on and turning off are operated by opening or closing the door, onto the back of which each sensor is installed.