



SMALLY SP

design
Domus Line

Surface LED spotlight

Materials:
thermoplastic polymers, PMMA

Finishes
chrome plated, aluminium,
satin nickel, steel

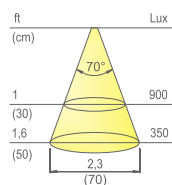
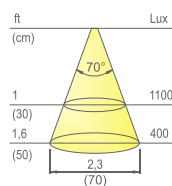
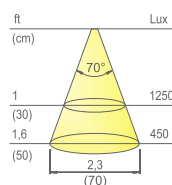
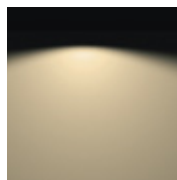
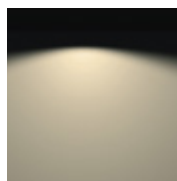
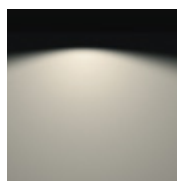
Light source:
SMD LED module

Wiring:
79" (2000mm)

Application type:
universal

Installation:
surface

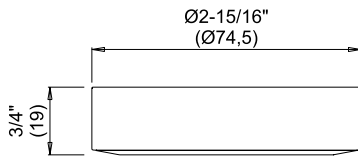
Patented



Colour appearance natural white
Colour temperature 4300 Kelvin
Luminous flux 390 lm
Luminous efficiency 130 lm/W
CRI Ra ≥ 80

Colour appearance warm white
Colour temperature 3000 Kelvin
Luminous flux 360 lm
Luminous efficiency 120 lm/W
CRI Ra ≥ 80

Colour appearance super warm white
Colour temperature 2700 Kelvin
Luminous flux 360 lm
Luminous efficiency 120 lm/W
CRI Ra ≥ 80



SMALLY SP PLUS



Code	Watt & Volt	Light colour
13648_ _N	3W @ 12Vdc	natural white
13648_ _B	3W @ 12Vdc	warm white
13648_ _B1	3W @ 12Vdc	super warm white

Code	Finish
09	chrome plated
10	aluminium
17	satin nickel
19	steel

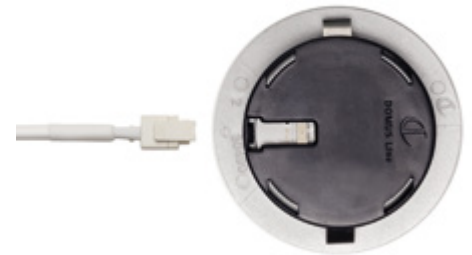
LED CONVERTER NOT INCLUDED. TO BE ORDERED SEPARATELY.



SETS OF 2, 3, 4 OR 5 SMALLY SP PLUS AND LED CONVERTER ARE AVAILABLE ON REQUEST.



SMALLY SP was designed for **surface installation** without the need to drill complex holes in the furniture. It is mounted simply by fixing the spacer with the two screws supplied, then applying the spotlight and pressing lightly. SMALLY SP incorporates a high-performance SMD LED module with **no-dot effect technology**, ensuring a uniform projection beam without the dot effect. SMALLY SP PLUS features the innovative **Plug&Play system (patented)**, for easy disconnection of the power cord from the spotlight.



FOR LED CONVERTERS AND ACCESSORIES SEE PAGE 200.

FINISHES



CHROME PLATED (code 09)



ALUMINIUM (code 10)



SATIN NICKEL (code 17)



STEEL (code 19)