



**SMALLY**

design  
Domus Line

**Recessed LED spotlight**

**Materials:**  
thermoplastic polymers, PMMA

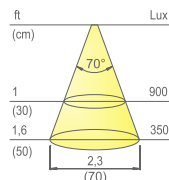
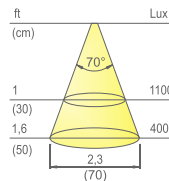
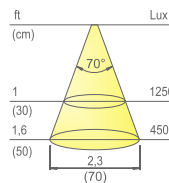
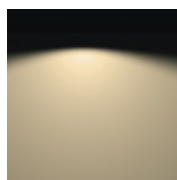
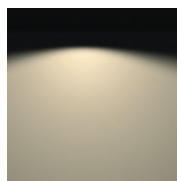
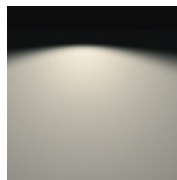
**Finishes**  
chrome plated, aluminium,  
satin nickel, steel

**Light source:**  
SMD LED module

**Wiring:**  
79" (2000mm)

**Application type:**  
universal

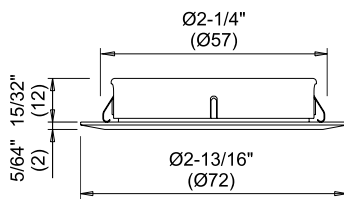
**Installation:**  
recessed  
**Patented**



**Colour appearance** natural white  
**Colour temperature** 4300 Kelvin  
**Luminous flux** 390 lm  
**Luminous efficiency** 130 lm/W  
**CRI** Ra ≥ 80

**Colour appearance** warm white  
**Colour temperature** 3000 Kelvin  
**Luminous flux** 360 lm  
**Luminous efficiency** 120 lm/W  
**CRI** Ra ≥ 80

**Colour appearance** super warm white  
**Colour temperature** 2700 Kelvin  
**Luminous flux** 360 lm  
**Luminous efficiency** 120 lm/W  
**CRI** Ra ≥ 80



**SMALLY PLUS**



Code	Watt & Volt	Light colour
13647__N	3W @ 12Vdc	natural white
13647__B	3W @ 12Vdc	warm white
13647__B1	3W @ 12Vdc	super warm white

Code	Finish
09	chrome plated
10	aluminium
17	satin nickel
19	steel

**LED CONVERTER NOT INCLUDED. TO BE ORDERED SEPARATELY.**



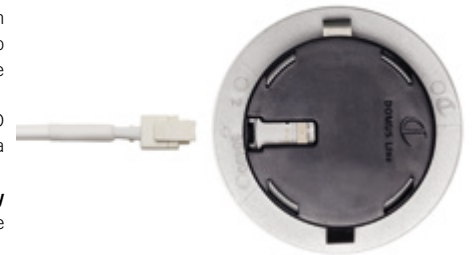
SETS OF 2, 3, 4 OR 5 SMALLY PLUS AND LED CONVERTER ARE AVAILABLE ON REQUEST.



**SMALLY** is a spotlight designed for **recessed installation in a hole Ø 2-1/4" (57mm) and just 15/32" (12mm) deep**. It is installed on wood panels with both through and blind holes. The fixing system, with two steel clamping springs, is easy to install without the use of tools.

SMALLY incorporates a high-performance SMD LED module with **no-dot effect technology**, ensuring a uniform projection beam without the dot effect.

SMALLY PLUS features the innovative **Plug&Play system (patented)**, for easy disconnection of the power cord from the spotlight.



Spacers are available on request for surface installation:

Code	Finish
20120__	see finishes codes



Inclined spacers are available on request for surface installation:

Code	Finish
20119__	see finishes codes



FOR LED CONVERTERS AND ACCESSORIES SEE PAGE 200.

**FINISHES**



**CHROME PLATED** (code 09)



**ALUMINIUM** (code 10)



**SATIN NICKEL** (code 17)



**STEEL** (code 19)