

LIMIT SP

Back-of-door proximity sensor



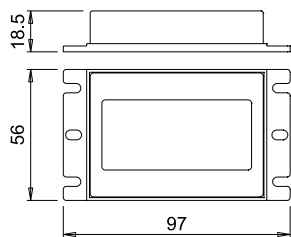
Code	0835105B
Input	220-240Vac
Output	220-240Vac
Power	150W
Input wiring	2000mm input cord with two-pole Europlug
Output wiring	500mm output cord with two-pole Europlug socket



aluminium



LIMIT SP is an infrared sensor with limit-switch function for inside cabinet installation. The luminaires connected to **LIMIT SP** are turned on and off by opening and closing the door in front of the sensor.



MULTI LIMIT

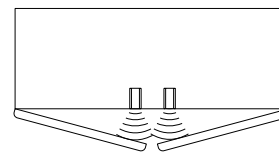
Back-door proximity multisensor



Code	0838301
Input	220-240Vac
Output	220-240Vac
Power	550W
Input wiring	3000mm input cord with two-pole Europlug
Output wiring	500mm output cord with two-pole Europlug socket

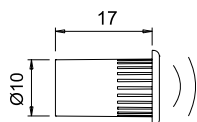


MULTI LIMIT is an infrared sensor with limit-switch function interior installation of multiple photocells (up to three). Turning on and off the luminaires connected to **MULTI LIMIT** takes place by opening and closing the doors in front of the sensors.

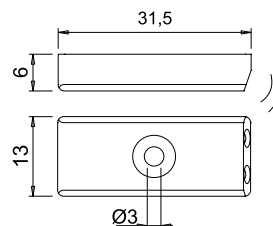


Sensors

Type	Code	Model	Cord length	Finish
A	1731703/S	recessed	2000mm flat disconnectable cord	black
B	1731903/S	surface	2000mm flat disconnectable cord	black



recessed installation



surface installation

Consult the installation manual for more details on drilling holes for assembly.